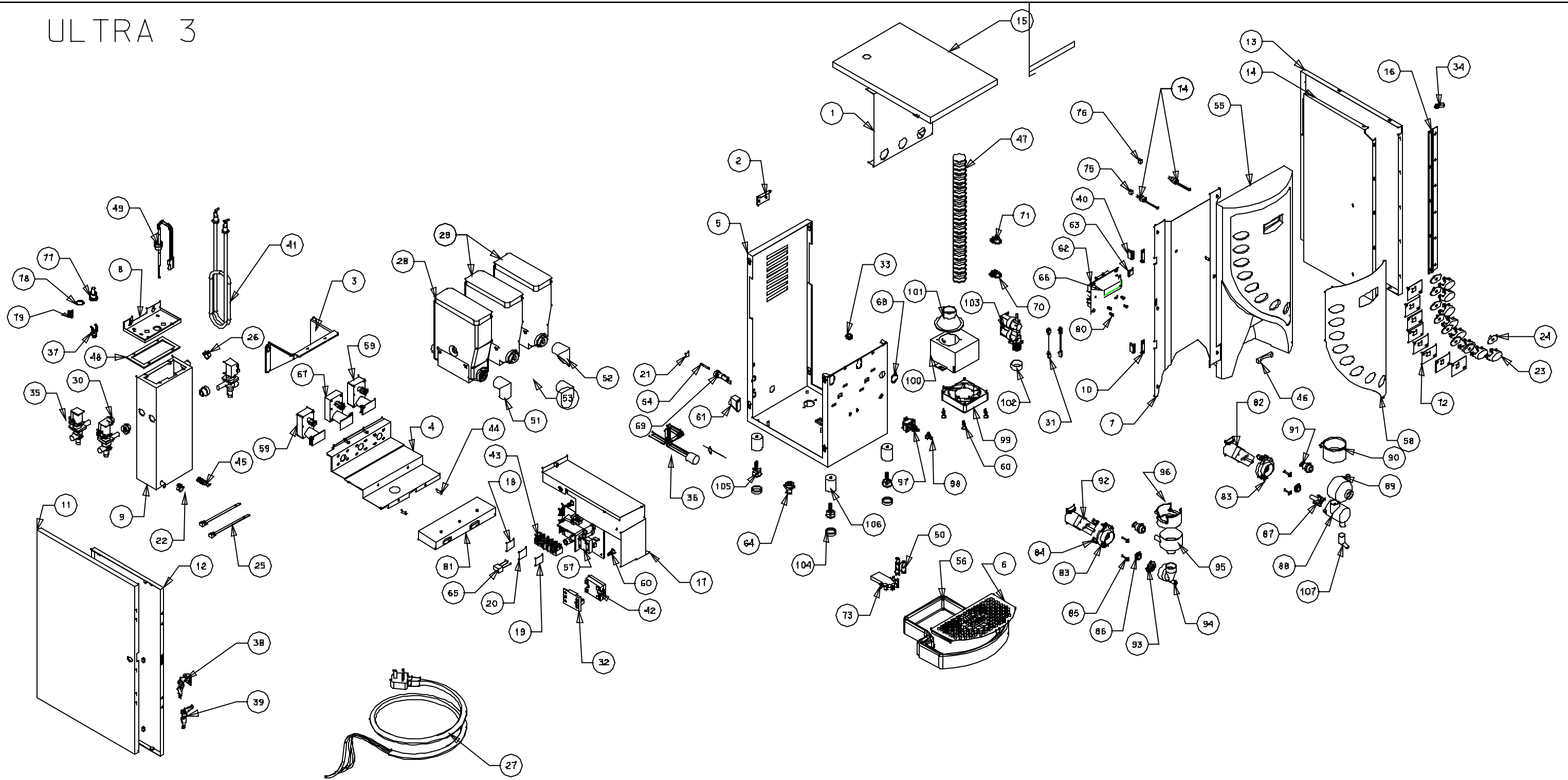


ULTRA 3



ISSUE 2

20-06-06

ULTRA 3

NO.	QTY.	DESCRIPTION	PART NUMBER
1	1	Boiler cover	65922
2	1	Rear lid holder	66150
3	1	Motor holder	66709
4	1	Canister shelf	67060
5	1	Main body 338 pl door	68086
6	1	Ultra 338 drip tray grill	67963
7	1	Ultra 338 door backer	67990
8	1	Lid	68081
9	1	Boiler	68085
10	2	Magnetic catch	69028
11	1	L/h side panel 338 ultra	68087
12	1	L/h side panel insert	68088
13	1	R/h side panel 338 ultra	68089
14	1	Right hand side panel in	68090
15	1	Cabinet lid 338 ultra	68091
16	1	Door hinge 338 ultra	68092
17	1	Electrics box ultra 338	68093
18	1	Live terminal label	10008
19	1	Neutral terminal label	10009
20	1	Earth terminal label	10010
21	1	F15 stickler	22022
22	1	Cobra clip 15mm normal	54012
23	8	Button cap	54041
24	8	Striker plate	54041
25	2	Cable tie for boiler	22102
26	1	Cobra clip 14mm normal	54011
27	1	UK mains lead with 13A p	54416
28	1	Can 220mm wire auger + a	54434
29	2	Can 220mm Plastic aug-tag	54436
30	3	Swaged port valve seal	54543
31	2	Interlink dc valve conn	54545
32	1	S S R Terminal cover	54552
33	1	16mm hole diaphragm grom	54604
34	1	P clip NX4	54790
35	3	Outlet valve 8mm 24vDC	55003
36	1	Sub loom whole pump	55150
37	1	Thermal cutout 95 degrees	55250
38	1	Mini camlock & cam 2 keys	55337
39	1	Key(s)	55337K
40	2	Door magnet	55341
41	1	Element 3KW 240V SID/TID	55430
42	1	SS relay 240v	55466
43	1	Terminal block strip 32A	55517
44	2	4mm pin bullet	55639
45	1	Hose bung flangeless plug	55692
46	1	Cup locator	55745
47	1	Hose 1 1/4 extra flex	55770
48	1	Boiler seal	55781
49	1	Boiler probe assembly	94543
50	3	Beverage spout	55983
51	1	Ingredient chute central	56028
52	1	R/h chute	56032
53	1	L/h chute	56037
54	1	15A fuse	56114
55	1	Ultra 3 door silver	56248
56	1	Ultra 338 drip tray	56316

NO.	QTY.	DESCRIPTION	PART NUMBER
57	1	Psu gourmet micro	56365
58	1	Coffetek ultra 3 picture	56542
59	2	Ing motor 140	59002
60	8	Pabs black psu dc micro	59004
61	1	Cable gland DC micro	59010
62	1	Rmcu dc control board	59011
63	1	Eprom psd 312b-15j (Stat	59014
64	1	Bowl adaptor	59041
65	1	Rifa mains capacitor EMC	59052
66	1	LCD blue	86680
67	1	Ing motor gear box 80 rpm	59207
68	1	Grommet 20mm	71026
69	1	16 amp fuseholder bussman	71101
70	1	Snapper clip no 10	71740
71	1	Snapper clip no 12	71745
72	8	Ultra 3 pab	56358
73	1	Dispense head ultra 3	56452
74	2	Flush switch with cap	54378
75	1	Switch cap red shut off	54382
76	1	Flush switch cap in green	54379
77	1	Re-set button	56457
78	1	'O' ring for reset button	56459
79	1	Spring 110Dx12x5x5.1	56469
80	4	Circuit board spacer	56175
81	1	Extract duct	66711
82	1	Whipper mtr long shaft	89001
83	2	whipper base grey	54034
84	4	Whipper clip grey	54126
85	4	Whipper screw ds416	56198
86	2	Large red whipper seal	54699
87	1	Impeller cafe 3/4/5/6/ser	56291
88	1	Whipper chamber 12mm out	55410
89	1	Mix bowl restrict grey	56165
90	1	Steam trap grey	55903
91	2	Mixing bowl skt/sonic wa	55372
92	1	Whipper mtr 24v DC short	59001S
93	1	Impeller disc small whip	56145
94	1	Whiper chamber horiz mid	55898
95	1	Mixing bowl unrest 3.8 br	59407
96	1	Steam trap double clear	56164
97	1	Toggle switch	55462
98	1	Switch cover	55463
99	1	Extract fan sounon	55239
100	1	Fan box	66390
101	1	Extract fan funnel	55930
103	1	Inlet valve 24v DC doub	59235
104	4	Foot cover non slip	55226
105	4	Small feet black m8 x 25	55223
106	4	Foot spacer 8mm tapped	56311
107	1	Pipette	55520
108	1	Dust cover for inlet val	20014
109	0.6m	Tube 9x15 dispense/inlet	55428
110	0.6m	Tube 11x18 overflow	55438
111	0.5m	Tube 6x10mm	55683
112	1	Keypad loom ultra 3	56443
113	1	Main loom ultra 3	56455
114	1	Flush loom ultra 3	56482
115	0.6m	Tube 8x12mm	59070